



# SPEC® CINT2006 Result

Copyright 2006-2017 Standard Performance Evaluation Corporation

Dell Inc.

SPECint®2006 = 73.4

PowerEdge R730 (Intel Xeon E5-2697A v4, 3.10 GHz)

SPECint\_base2006 = 70.8

CPU2006 license: 55

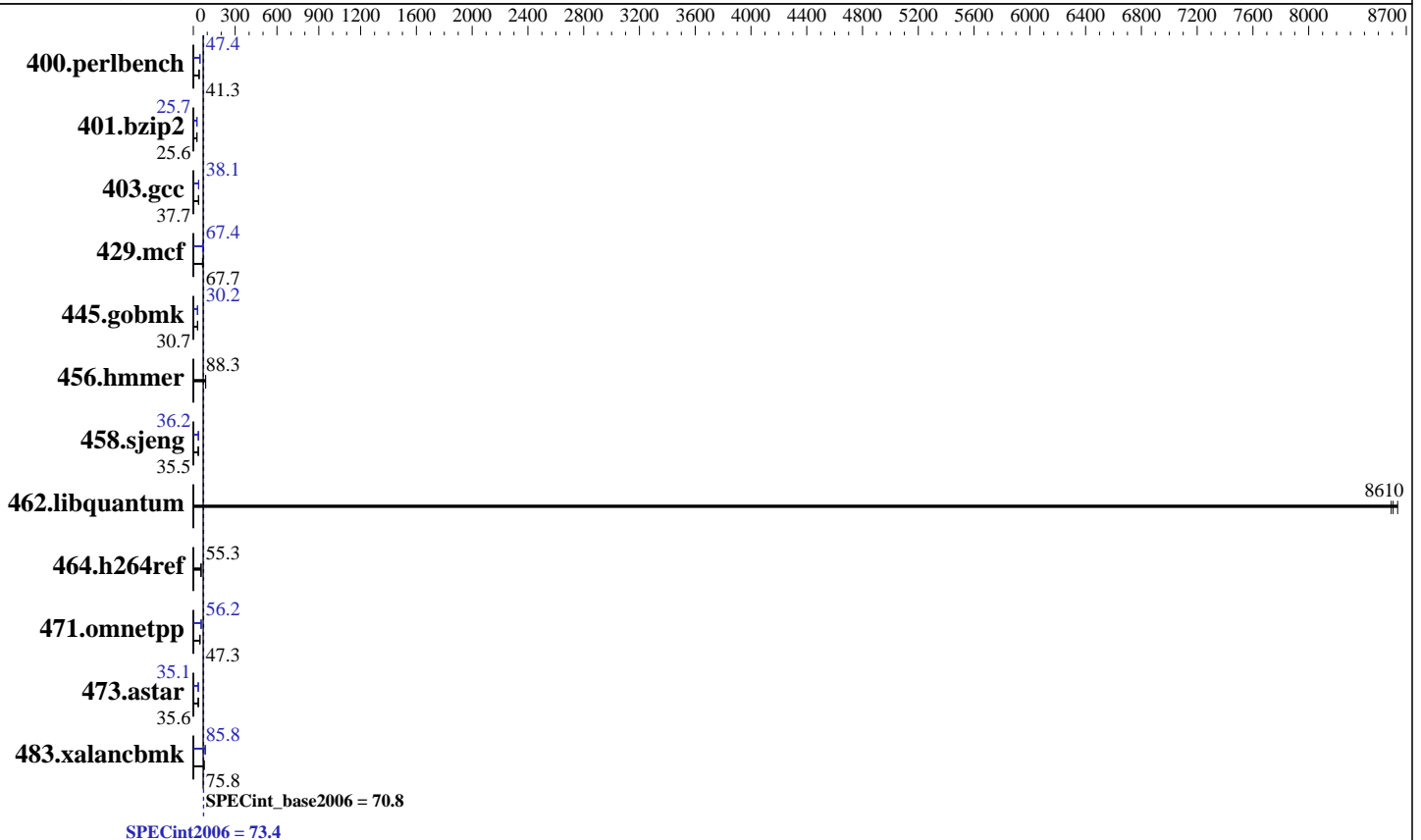
Test date: Feb-2017

Test sponsor: Dell Inc.

Hardware Availability: Mar-2016

Tested by: Dell Inc.

Software Availability: Nov-2016



## Hardware

CPU Name: Intel Xeon E5-2697A v4  
 CPU Characteristics: Intel Turbo Boost Technology up to 3.60 GHz  
 CPU MHz: 3100  
 FPU: Integrated  
 CPU(s) enabled: 32 cores, 2 chips, 16 cores/chip  
 CPU(s) orderable: 1,2 chips  
 Primary Cache: 32 KB I + 32 KB D on chip per core  
 Secondary Cache: 256 KB I+D on chip per core  
 L3 Cache: 40 MB I+D on chip per chip  
 Other Cache: None  
 Memory: 256 GB (16 x 16 GB 2Rx8 PC4-2400T-R)  
 Disk Subsystem: 2 x 2000 GB 7200 RPM SAS RAID 0  
 Other Hardware: None

## Software

Operating System: SUSE Linux Enterprise Server 12  
 3.12.28-4-default  
 Compiler: C/C++: Version 17.0.0.098 of Intel C/C++  
 Compiler for Linux  
 Auto Parallel: Yes  
 File System: ext4  
 System State: Run level 3 (multi-user)  
 Base Pointers: 32/64-bit  
 Peak Pointers: 32/64-bit  
 Other Software: Microquill SmartHeap V10.2



# SPEC CINT2006 Result

Copyright 2006-2017 Standard Performance Evaluation Corporation

Dell Inc.

SPECint2006 = 73.4

PowerEdge R730 (Intel Xeon E5-2697A v4, 3.10 GHz)

SPECint\_base2006 = 70.8

CPU2006 license: 55  
Test sponsor: Dell Inc.  
Tested by: Dell Inc.

Test date: Feb-2017  
Hardware Availability: Mar-2016  
Software Availability: Nov-2016

## Results Table

Benchmark	Base						Peak					
	Seconds	Ratio	Seconds	Ratio	Seconds	Ratio	Seconds	Ratio	Seconds	Ratio	Seconds	Ratio
400.perlbench	236	41.4	<u>237</u>	<u>41.3</u>	238	41.1	<u>206</u>	<u>47.4</u>	206	47.4	207	47.2
401.bzip2	376	25.6	381	25.3	<u>377</u>	<u>25.6</u>	376	25.7	375	25.7	<u>375</u>	<u>25.7</u>
403.gcc	213	37.8	214	37.6	<u>213</u>	<u>37.7</u>	211	38.1	212	38.0	<u>211</u>	<u>38.1</u>
429.mcf	133	68.3	<u>135</u>	<u>67.7</u>	139	65.6	135	67.7	137	66.4	<u>135</u>	<u>67.4</u>
445.gobmk	341	30.8	342	30.7	<u>341</u>	<u>30.7</u>	347	30.2	<u>347</u>	<u>30.2</u>	347	30.2
456.hmmer	106	88.3	106	88.4	<u>106</u>	<u>88.3</u>	106	88.3	106	88.4	<u>106</u>	<u>88.3</u>
458.sjeng	<u>341</u>	<u>35.5</u>	340	35.6	341	35.5	<u>334</u>	<u>36.2</u>	334	36.3	334	36.2
462.libquantum	<u>2.41</u>	<u>8610</u>	2.40	8640	2.41	8590	<u>2.41</u>	<u>8610</u>	2.40	8640	2.41	8590
464.h264ref	400	55.3	402	55.1	<u>400</u>	<u>55.3</u>	400	55.3	402	55.1	<u>400</u>	<u>55.3</u>
471.omnetpp	132	47.4	133	47.0	<u>132</u>	<u>47.3</u>	111	56.2	<u>111</u>	<u>56.2</u>	111	56.1
473.astar	<u>197</u>	<u>35.6</u>	197	35.7	199	35.3	201	35.0	198	35.5	<u>200</u>	<u>35.1</u>
483.xalancbmk	<u>91.1</u>	<u>75.8</u>	91.4	75.5	88.5	78.0	<u>80.4</u>	<u>85.8</u>	80.3	85.9	80.8	85.4

Results appear in the order in which they were run. Bold underlined text indicates a median measurement.

## Submit Notes

The numactl mechanism was used to bind copies to processors. The config file option 'submit' was used to generate numactl commands to bind each copy to a specific processor. For details, please see the config file.

## Operating System Notes

Stack size set to unlimited using "ulimit -s unlimited"

## Platform Notes

BIOS settings:  
Snoop Mode set to Opportunistic Snoop Broadcast  
Virtualization Technology disabled  
System Profile set to Custom  
CPU Performance set to Maximum Performance  
C States set to Autonomous  
C1E disabled  
Energy Efficient Turbo disabled  
Uncore Frequency set to Dynamic  
Energy Efficiency Policy set to Performance  
Memory Patrol Scrub disabled  
Logical Processor disabled  
Sysinfo program /root/previous-cpu2006-1.2/config/sysinfo.rev6993  
Revision 6993 of 2015-11-06 (b5e8d4b4eb51ed28d7f98696cbe290c1)  
running on linux-0171 Tue Feb 7 13:49:54 2017

This section contains SUT (System Under Test) info as seen by  
Continued on next page



# SPEC CINT2006 Result

Copyright 2006-2017 Standard Performance Evaluation Corporation

Dell Inc.

SPECint2006 = 73.4

PowerEdge R730 (Intel Xeon E5-2697A v4, 3.10 GHz)

SPECint\_base2006 = 70.8

CPU2006 license: 55

Test date: Feb-2017

Test sponsor: Dell Inc.

Hardware Availability: Mar-2016

Tested by: Dell Inc.

Software Availability: Nov-2016

## Platform Notes (Continued)

some common utilities. To remove or add to this section, see:  
<http://www.spec.org/cpu2006/Docs/config.html#sysinfo>

```

From /proc/cpuinfo
  model name : Intel(R) Xeon(R) CPU E5-2697A v4 @ 2.60GHz
  2 "physical id"s (chips)
  32 "processors"
  cores, siblings (Caution: counting these is hw and system dependent. The
  following excerpts from /proc/cpuinfo might not be reliable. Use with
  caution.)
    cpu cores : 16
    siblings  : 16
    physical 0: cores 0 1 2 3 4 5 6 7 8 9 10 11 12 13 14 15
    physical 1: cores 0 1 2 3 4 5 6 7 8 9 10 11 12 13 14 15
  cache size : 40960 KB

```

```

From /proc/meminfo
MemTotal:      264567484 kB
HugePages_Total:    0
Hugepagesize:    2048 kB

```

```

/usr/bin/lsb_release -d
SUSE Linux Enterprise Server 12

```

```

From /etc/*release* /etc/*version*
SuSE-release:
SUSE Linux Enterprise Server 12 (x86_64)
VERSION = 12
PATCHLEVEL = 0
# This file is deprecated and will be removed in a future service pack or
release.
# Please check /etc/os-release for details about this release.
os-release:
NAME="SLES"
VERSION="12"
VERSION_ID="12"
PRETTY_NAME="SUSE Linux Enterprise Server 12"
ID="sles"
ANSI_COLOR="0;32"
CPE_NAME="cpe:/o:suse:sles:12"

```

```

uname -a:
Linux linux-0171 3.12.28-4-default #1 SMP Thu Sep 25 17:02:34 UTC 2014
(9879bd4) x86_64 x86_64 x86_64 GNU/Linux

```

run-level 3 Feb 7 13:33

```

SPEC is set to: /root/previous-cpu2006-1.2
Filesystem      Type  Size  Used Avail Use% Mounted on
/dev/sda2       ext4  246G   19G  226G   8% /
Additional information from dmidecode:

```

Continued on next page



# SPEC CINT2006 Result

Copyright 2006-2017 Standard Performance Evaluation Corporation

Dell Inc.

SPECint2006 = 73.4

PowerEdge R730 (Intel Xeon E5-2697A v4, 3.10 GHz)

SPECint\_base2006 = 70.8

CPU2006 license: 55

Test sponsor: Dell Inc.

Tested by: Dell Inc.

Test date: Feb-2017

Hardware Availability: Mar-2016

Software Availability: Nov-2016

## Platform Notes (Continued)

Warning: Use caution when you interpret this section. The 'dmidecode' program reads system data which is "intended to allow hardware to be accurately determined", but the intent may not be met, as there are frequent changes to hardware, firmware, and the "DMTF SMBIOS" standard.

BIOS Dell Inc. 2.3.4 11/08/2016

Memory:

7x 00AD063200AD HMA82GR7MFR8N-UH 16 GB 2 rank 2400 MHz

9x 00CE00B300CE M393A2K43BB1-CRC 16 GB 2 rank 2400 MHz

8x Not Specified Not Specified

(End of data from sysinfo program)

## General Notes

Environment variables set by runspec before the start of the run:

KMP\_AFFINITY = "granularity=fine,scatter"

LD\_LIBRARY\_PATH = "/root/previous-cpu2006-1.2/libs/32:/root/previous-cpu2006-1.2/libs/64:/root/previous-cpu2006-1.2/sh10.2"

OMP\_NUM\_THREADS = "20"

The Dell PowerEdge R730 and the PowerEdge R730xd models are electronically equivalent. The results have been measured on a Dell PowerEdge R730xd model.

Binaries compiled on a system with 1x Intel Core i7-4790K CPU + 32GB RAM

memory using Redhat Enterprise Linux 7.2

Transparent Huge Pages enabled with:

echo always > /sys/kernel/mm/transparent\_hugepage/enabled

## Base Compiler Invocation

C benchmarks:

icc -m64

C++ benchmarks:

icpc -m64

## Base Portability Flags

400.perlbench: -DSPEC\_CPU\_LP64 -DSPEC\_CPU\_LINUX\_X64

401.bzip2: -DSPEC\_CPU\_LP64

403.gcc: -DSPEC\_CPU\_LP64

429.mcf: -DSPEC\_CPU\_LP64

445.gobmk: -DSPEC\_CPU\_LP64

456.hmmer: -DSPEC\_CPU\_LP64

458.sjeng: -DSPEC\_CPU\_LP64

462.libquantum: -DSPEC\_CPU\_LP64 -DSPEC\_CPU\_LINUX

464.h264ref: -DSPEC\_CPU\_LP64

471.omnetpp: -DSPEC\_CPU\_LP64

Continued on next page

Standard Performance Evaluation Corporation

info@spec.org

http://www.spec.org/

Page 4



# SPEC CINT2006 Result

Copyright 2006-2017 Standard Performance Evaluation Corporation

Dell Inc.

SPECint2006 = 73.4

PowerEdge R730 (Intel Xeon E5-2697A v4, 3.10 GHz)

SPECint\_base2006 = 70.8

CPU2006 license: 55

Test date: Feb-2017

Test sponsor: Dell Inc.

Hardware Availability: Mar-2016

Tested by: Dell Inc.

Software Availability: Nov-2016

## Base Portability Flags (Continued)

473.astar: -DSPEC\_CPU\_LP64  
483.xalancbmk: -DSPEC\_CPU\_LP64 -DSPEC\_CPU\_LINUX

## Base Optimization Flags

C benchmarks:

-xCORE-AVX2 -ipo -O3 -no-prec-div -parallel -qopt-prefetch  
-auto-p32

C++ benchmarks:

-xCORE-AVX2 -ipo -O3 -no-prec-div -qopt-prefetch -auto-p32  
-Wl,-z,muldefs -L/sh10.2 -lsmartheap64

## Base Other Flags

C benchmarks:

403.gcc: -Dalloca=\_alloca

## Peak Compiler Invocation

C benchmarks (except as noted below):

icc -m64

400.perlbench: icc -m32 -L/opt/intel/compilers\_and\_libraries\_2017/linux/lib/ia32

445.gobmk: icc -m32 -L/opt/intel/compilers\_and\_libraries\_2017/linux/lib/ia32

C++ benchmarks (except as noted below):

icc -m32 -L/opt/intel/compilers\_and\_libraries\_2017/linux/lib/ia32

473.astar: icpc -m64

## Peak Portability Flags

400.perlbench: -D\_FILE\_OFFSET\_BITS=64 -DSPEC\_CPU\_LINUX\_IA32

401.bzip2: -DSPEC\_CPU\_LP64

403.gcc: -DSPEC\_CPU\_LP64

429.mcf: -DSPEC\_CPU\_LP64

445.gobmk: -D\_FILE\_OFFSET\_BITS=64

456.hmmer: -DSPEC\_CPU\_LP64

Continued on next page

Standard Performance Evaluation Corporation

info@spec.org

http://www.spec.org/



# SPEC CINT2006 Result

Copyright 2006-2017 Standard Performance Evaluation Corporation

Dell Inc.

SPECint2006 = 73.4

PowerEdge R730 (Intel Xeon E5-2697A v4, 3.10 GHz)

SPECint\_base2006 = 70.8

CPU2006 license: 55

Test date: Feb-2017

Test sponsor: Dell Inc.

Hardware Availability: Mar-2016

Tested by: Dell Inc.

Software Availability: Nov-2016

## Peak Portability Flags (Continued)

458.sjeng: -DSPEC\_CPU\_LP64  
 462.libquantum: -DSPEC\_CPU\_LP64 -DSPEC\_CPU\_LINUX  
 464.h264ref: -DSPEC\_CPU\_LP64  
 471.omnetpp: -D\_FILE\_OFFSET\_BITS=64  
 473.astar: -DSPEC\_CPU\_LP64  
 483.xalancbmk: -D\_FILE\_OFFSET\_BITS=64 -DSPEC\_CPU\_LINUX

## Peak Optimization Flags

C benchmarks:

400.perlbench: -prof-gen(pass 1) -prof-use(pass 2) -xCORE-AVX2(pass 2)  
 -par-num-threads=1(pass 1) -ipo(pass 2) -O3(pass 2)  
 -no-prec-div(pass 2) -qopt-prefetch

401.bzip2: -prof-gen(pass 1) -prof-use(pass 2) -xCORE-AVX2(pass 2)  
 -par-num-threads=1(pass 1) -ipo(pass 2) -O3(pass 2)  
 -no-prec-div -auto-ilp32 -qopt-prefetch

403.gcc: -xCORE-AVX2 -ipo -O3 -no-prec-div -inline-calloc  
 -qopt-malloc-options=3 -auto-ilp32

429.mcf: -xCORE-AVX2 -ipo -O3 -no-prec-div -parallel  
 -qopt-prefetch -auto-p32

445.gobmk: -prof-gen(pass 1) -prof-use(pass 2) -xCORE-AVX2(pass 2)  
 -par-num-threads=1(pass 1) -ipo(pass 2) -O3(pass 2)  
 -no-prec-div(pass 2)

456.hmmer: basepeak = yes

458.sjeng: -prof-gen(pass 1) -prof-use(pass 2) -xCORE-AVX2(pass 2)  
 -par-num-threads=1(pass 1) -ipo(pass 2) -O3(pass 2)  
 -no-prec-div(pass 2) -unroll4

462.libquantum: basepeak = yes

464.h264ref: basepeak = yes

C++ benchmarks:

471.omnetpp: -prof-gen(pass 1) -prof-use(pass 2) -xCORE-AVX2(pass 2)  
 -par-num-threads=1(pass 1) -ipo(pass 2) -O3(pass 2)  
 -no-prec-div(pass 2) -qopt-ra-region-strategy=block  
 -Wl,-z,muldefs -L/sh10.2 -lsmartheap

473.astar: -xCORE-AVX2 -ipo -O3 -no-prec-div -qopt-prefetch  
 -auto-p32 -Wl,-z,muldefs -L/sh10.2 -lsmartheap64

Continued on next page



# SPEC CINT2006 Result

Copyright 2006-2017 Standard Performance Evaluation Corporation

Dell Inc.

SPECint2006 = 73.4

PowerEdge R730 (Intel Xeon E5-2697A v4, 3.10 GHz)

SPECint\_base2006 = 70.8

CPU2006 license: 55

Test date: Feb-2017

Test sponsor: Dell Inc.

Hardware Availability: Mar-2016

Tested by: Dell Inc.

Software Availability: Nov-2016

## Peak Optimization Flags (Continued)

483.xalanbmk: -xCORE-AVX2 -ipo -O3 -no-prec-div -qopt-prefetch  
-Wl,-z,muldefs -L/sh10.2 -lsmartheap

## Peak Other Flags

C benchmarks:

403.gcc: -Dalloca=\_alloca

The flags files that were used to format this result can be browsed at

<http://www.spec.org/cpu2006/flags/Intel-ic17.0-official-linux64.html>

<http://www.spec.org/cpu2006/flags/Dell-Platform-Flags-PowerEdge13G-revE.html>

You can also download the XML flags sources by saving the following links:

<http://www.spec.org/cpu2006/flags/Intel-ic17.0-official-linux64.xml>

<http://www.spec.org/cpu2006/flags/Dell-Platform-Flags-PowerEdge13G-revE.xml>

SPEC and SPECint are registered trademarks of the Standard Performance Evaluation Corporation. All other brand and product names appearing in this result are trademarks or registered trademarks of their respective holders.

For questions about this result, please contact the tester.  
For other inquiries, please contact [webmaster@spec.org](mailto:webmaster@spec.org).

Tested with SPEC CPU2006 v1.2.

Report generated on Tue Mar 7 16:14:48 2017 by SPEC CPU2006 PS/PDF formatter v6932.

Originally published on 7 March 2017.