



# SPEC<sup>®</sup> CINT2006 Result

Copyright 2006-2015 Standard Performance Evaluation Corporation

## Fujitsu

**SPECint<sup>®</sup>2006 = 56.8**

PRIMERGY RX2530 M1, Intel Xeon E5-2683 v3, 2.0 GHz

**SPECint\_base2006 = 53.7**

CPU2006 license: 19

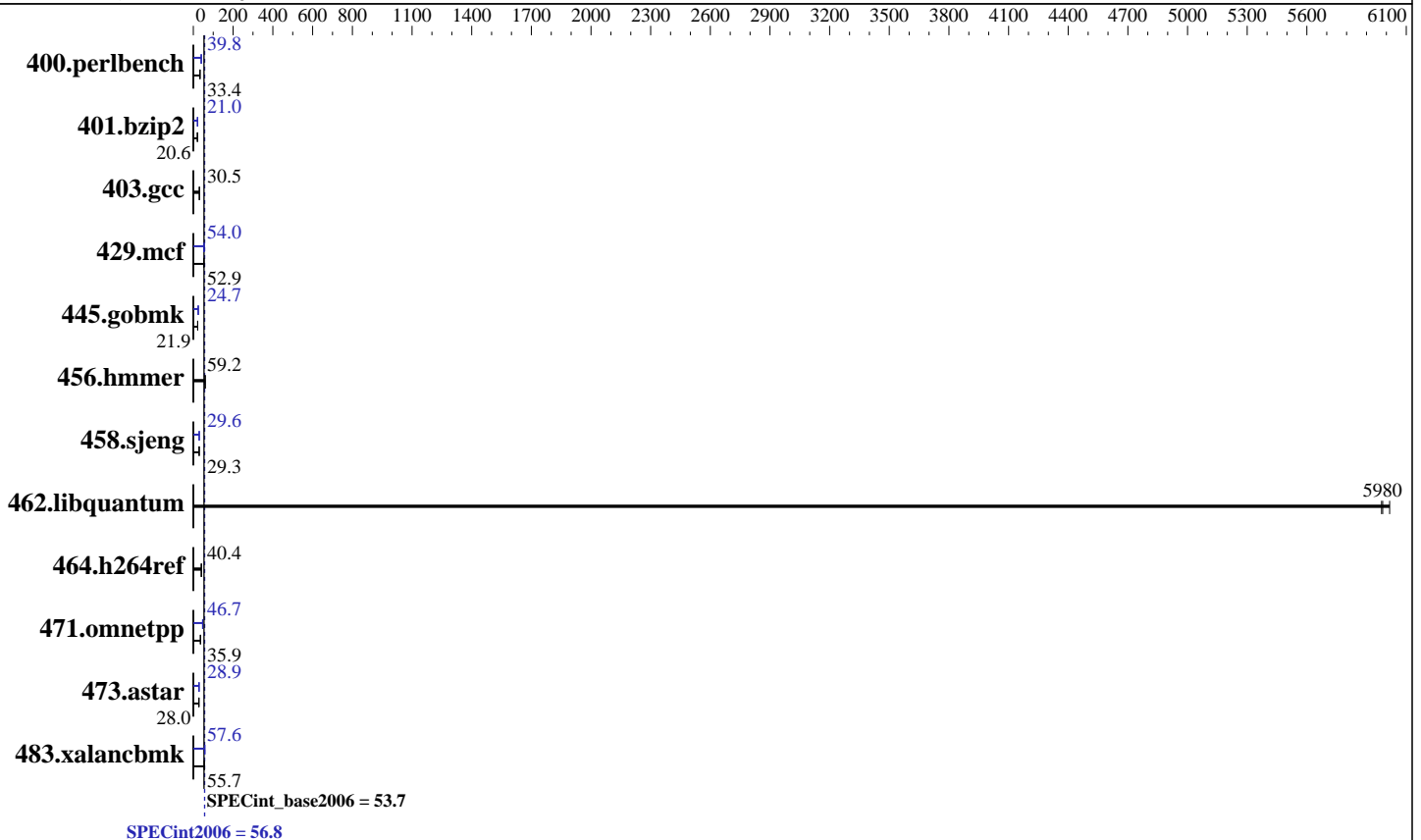
Test sponsor: Fujitsu

Tested by: Fujitsu

Test date: Mar-2015

Hardware Availability: Feb-2015

Software Availability: Nov-2013



### Hardware

CPU Name: Intel Xeon E5-2683 v3  
 CPU Characteristics: Intel Turbo Boost Technology up to 3.00 GHz  
 CPU MHz: 2000  
 FPU: Integrated  
 CPU(s) enabled: 28 cores, 2 chips, 14 cores/chip, 2 threads/core  
 CPU(s) orderable: 1,2 chip  
 Primary Cache: 32 KB I + 32 KB D on chip per core  
 Secondary Cache: 256 KB I+D on chip per core  
 L3 Cache: 35 MB I+D on chip per chip  
 Other Cache: None  
 Memory: 256 GB (16 x 16 GB 2Rx4 PC4-2133P-R)  
 Disk Subsystem: 1 x SATA, 500 GB, 7200 RPM  
 Other Hardware: None

### Software

Operating System: Red Hat Enterprise Linux Server release 6.5 (Santiago)  
 2.6.32-431.23.3.el6.x86\_64  
 Compiler: C/C++: Version 14.0.0.080 of Intel C++ Studio XE for Linux  
 Auto Parallel: Yes  
 File System: ext4  
 System State: Run level 3 (multi-user)  
 Base Pointers: 32/64-bit  
 Peak Pointers: 32/64-bit  
 Other Software: Microquill SmartHeap V10.0



# SPEC CINT2006 Result

Copyright 2006-2015 Standard Performance Evaluation Corporation

## Fujitsu

SPECint2006 = **56.8**

PRIMERGY RX2530 M1, Intel Xeon E5-2683 v3, 2.0 GHz

SPECint\_base2006 = **53.7**

CPU2006 license: 19  
Test sponsor: Fujitsu  
Tested by: Fujitsu

Test date: Mar-2015  
Hardware Availability: Feb-2015  
Software Availability: Nov-2013

## Results Table

Benchmark	Base						Peak					
	Seconds	Ratio	Seconds	Ratio	Seconds	Ratio	Seconds	Ratio	Seconds	Ratio	Seconds	Ratio
400.perlbench	<u>292</u>	<u>33.4</u>	292	33.5	293	33.4	<u>245</u>	<u>39.8</u>	246	39.8	245	39.9
401.bzip2	468	20.6	<u>467</u>	<u>20.6</u>	467	20.7	460	21.0	<u>459</u>	<u>21.0</u>	459	21.0
403.gcc	263	30.6	264	30.5	<u>264</u>	<u>30.5</u>	263	30.6	264	30.5	<u>264</u>	<u>30.5</u>
429.mcf	171	53.4	<u>172</u>	<u>52.9</u>	172	52.9	171	53.4	168	54.4	<u>169</u>	<u>54.0</u>
445.gobmk	478	21.9	<u>478</u>	<u>21.9</u>	478	21.9	425	24.7	425	24.7	<u>425</u>	<u>24.7</u>
456.hammer	156	59.6	<u>158</u>	<u>59.2</u>	159	58.8	156	59.6	<u>158</u>	<u>59.2</u>	159	58.8
458.sjeng	412	29.3	413	29.3	<u>413</u>	<u>29.3</u>	409	29.6	408	29.6	<u>408</u>	<u>29.6</u>
462.libquantum	3.44	6020	<u>3.46</u>	<u>5980</u>	3.47	5980	3.44	6020	<u>3.46</u>	<u>5980</u>	3.47	5980
464.h264ref	<u>548</u>	<u>40.4</u>	548	40.4	547	40.5	<u>548</u>	<u>40.4</u>	548	40.4	547	40.5
471.omnetpp	<u>174</u>	<u>35.9</u>	175	35.7	173	36.1	135	46.4	<u>134</u>	<u>46.7</u>	133	46.9
473.astar	249	28.2	<u>251</u>	<u>28.0</u>	251	28.0	243	28.9	245	28.6	<u>243</u>	<u>28.9</u>
483.xalancbmk	124	55.8	124	55.6	<u>124</u>	<u>55.7</u>	119	57.9	120	57.5	<u>120</u>	<u>57.6</u>

Results appear in the order in which they were run. Bold underlined text indicates a median measurement.

## Submit Notes

The config file option 'submit' was used.

## Operating System Notes

Stack size set to unlimited using "ulimit -s unlimited"

## Platform Notes

BIOS configuration:  
Energy Performance = Performance  
Utilization Profile = Unbalanced  
QPI snoop mode: Early Snoop  
COD Enable = Disabled, Early Snoop = Enabled  
CPU C1E Support = Disabled

## General Notes

Environment variables set by runspec before the start of the run:  
KMP\_AFFINITY = "granularity=fine,compact,1,0"  
LD\_LIBRARY\_PATH = "/home/SPECcpu2006/libs/32:/home/SPECcpu2006/libs/64:/home/SPECcpu2006/sh"  
OMP\_NUM\_THREADS = "28"

Binaries compiled on a system with 1x Core i7-860 CPU + 8GB memory using RedHat EL 6.4  
Transparent Huge Pages enabled with:  
echo always > /sys/kernel/mm/redhat\_transparent\_hugepage/enabled

Continued on next page



# SPEC CINT2006 Result

Copyright 2006-2015 Standard Performance Evaluation Corporation

**Fujitsu**

**SPECint2006 = 56.8**

PRIMERGY RX2530 M1, Intel Xeon E5-2683 v3, 2.0 GHz

**SPECint\_base2006 = 53.7**

**CPU2006 license:** 19

**Test sponsor:** Fujitsu

**Tested by:** Fujitsu

**Test date:** Mar-2015

**Hardware Availability:** Feb-2015

**Software Availability:** Nov-2013

## General Notes (Continued)

runspec command invoked through numactl i.e.:  
numactl --interleave=all runspec <etc>

For information about Fujitsu please visit: <http://www.fujitsu.com>

## Base Compiler Invocation

C benchmarks:

icc -m64

C++ benchmarks:

icpc -m64

## Base Portability Flags

400.perlbench: -DSPEC\_CPU\_LP64 -DSPEC\_CPU\_LINUX\_X64  
401.bzip2: -DSPEC\_CPU\_LP64  
403.gcc: -DSPEC\_CPU\_LP64  
429.mcf: -DSPEC\_CPU\_LP64  
445.gobmk: -DSPEC\_CPU\_LP64  
456.hmmer: -DSPEC\_CPU\_LP64  
458.sjeng: -DSPEC\_CPU\_LP64  
462.libquantum: -DSPEC\_CPU\_LP64 -DSPEC\_CPU\_LINUX  
464.h264ref: -DSPEC\_CPU\_LP64  
471.omnetpp: -DSPEC\_CPU\_LP64  
473.astar: -DSPEC\_CPU\_LP64  
483.xalanbmk: -DSPEC\_CPU\_LP64 -DSPEC\_CPU\_LINUX

## Base Optimization Flags

C benchmarks:

-xCORE-AVX2 -ipo -O3 -no-prec-div -parallel -opt-prefetch -auto-p32

C++ benchmarks:

-xCORE-AVX2 -ipo -O3 -no-prec-div -opt-prefetch -auto-p32  
-Wl,-z,muldefs -L/sh -lsmartheap64

## Base Other Flags

C benchmarks:

403.gcc: -Dalloca=\_alloca



# SPEC CINT2006 Result

Copyright 2006-2015 Standard Performance Evaluation Corporation

**Fujitsu**

**SPECint2006 = 56.8**

PRIMERGY RX2530 M1, Intel Xeon E5-2683 v3, 2.0 GHz

**SPECint\_base2006 = 53.7**

**CPU2006 license:** 19

**Test date:** Mar-2015

**Test sponsor:** Fujitsu

**Hardware Availability:** Feb-2015

**Tested by:** Fujitsu

**Software Availability:** Nov-2013

## Peak Compiler Invocation

C benchmarks (except as noted below):

icc -m64

400.perlbench: icc -m32

445.gobmk: icc -m32

C++ benchmarks (except as noted below):

icpc -m32

473.astar: icpc -m64

## Peak Portability Flags

400.perlbench: -DSPEC\_CPU\_LINUX\_IA32  
 401.bzip2: -DSPEC\_CPU\_LP64  
 403.gcc: -DSPEC\_CPU\_LP64  
 429.mcf: -DSPEC\_CPU\_LP64  
 456.hmmer: -DSPEC\_CPU\_LP64  
 458.sjeng: -DSPEC\_CPU\_LP64  
 462.libquantum: -DSPEC\_CPU\_LP64 -DSPEC\_CPU\_LINUX  
 464.h264ref: -DSPEC\_CPU\_LP64  
 473.astar: -DSPEC\_CPU\_LP64  
 483.xalancbmk: -DSPEC\_CPU\_LINUX

## Peak Optimization Flags

C benchmarks:

400.perlbench: -xCORE-AVX2(pass 2) -prof-gen(pass 1) -ipo(pass 2)  
 -O3(pass 2) -no-prec-div(pass 2) -prof-use(pass 2)  
 -opt-prefetch -ansi-alias

401.bzip2: -xCORE-AVX2(pass 2) -prof-gen(pass 1) -ipo(pass 2)  
 -O3(pass 2) -no-prec-div -prof-use(pass 2) -auto-ilp32  
 -opt-prefetch -ansi-alias

403.gcc: basepeak = yes

429.mcf: -xCORE-AVX2 -ipo -O3 -no-prec-div -parallel  
 -opt-prefetch -auto-p32

445.gobmk: -xCORE-AVX2(pass 2) -prof-gen(pass 1) -prof-use(pass 2)  
 -ansi-alias

Continued on next page



# SPEC CINT2006 Result

Copyright 2006-2015 Standard Performance Evaluation Corporation

**Fujitsu**

**SPECint2006 = 56.8**

PRIMERGY RX2530 M1, Intel Xeon E5-2683 v3, 2.0 GHz

**SPECint\_base2006 = 53.7**

CPU2006 license: 19

Test sponsor: Fujitsu

Tested by: Fujitsu

Test date: Mar-2015

Hardware Availability: Feb-2015

Software Availability: Nov-2013

## Peak Optimization Flags (Continued)

456.hmmcr: basepeak = yes

458.sjeng: -xCORE-AVX2(pass 2) -prof-gen(pass 1) -ipo(pass 2)  
-O3(pass 2) -no-prec-div(pass 2) -prof-use(pass 2)  
-unroll4

462.libquantum: basepeak = yes

464.h264ref: basepeak = yes

C++ benchmarks:

471.omnetpp: -xCORE-AVX2(pass 2) -prof-gen(pass 1) -ipo(pass 2)  
-O3(pass 2) -no-prec-div(pass 2) -prof-use(pass 2)  
-opt-ra-region-strategy=block -ansi-alias  
-Wl,-z,muldefs -L/sh -lsmartheap

473.astar: -xCORE-AVX2 -ipo -O3 -no-prec-div -opt-prefetch  
-auto-p32 -Wl,-z,muldefs -L/sh -lsmartheap64

483.xalancbmk: -xCORE-AVX2 -ipo -O3 -no-prec-div -opt-prefetch  
-ansi-alias -Wl,-z,muldefs -L/sh -lsmartheap

## Peak Other Flags

C benchmarks:

403.gcc: -Dalloca=\_alloca

The flags files that were used to format this result can be browsed at

<http://www.spec.org/cpu2006/flags/Intel-ic14.0-official-linux64-revB.html>

<http://www.spec.org/cpu2006/flags/Fujitsu-Platform-Settings-V1.2-HSW-RevA.html>

You can also download the XML flags sources by saving the following links:

<http://www.spec.org/cpu2006/flags/Intel-ic14.0-official-linux64-revB.xml>

<http://www.spec.org/cpu2006/flags/Fujitsu-Platform-Settings-V1.2-HSW-RevA.xml>



# SPEC CINT2006 Result

Copyright 2006-2015 Standard Performance Evaluation Corporation

Fujitsu

SPECint2006 = 56.8

PRIMERGY RX2530 M1, Intel Xeon E5-2683 v3, 2.0 GHz

SPECint\_base2006 = 53.7

CPU2006 license: 19

Test sponsor: Fujitsu

Tested by: Fujitsu

Test date: Mar-2015

Hardware Availability: Feb-2015

Software Availability: Nov-2013

SPEC and SPECint are registered trademarks of the Standard Performance Evaluation Corporation. All other brand and product names appearing in this result are trademarks or registered trademarks of their respective holders.

For questions about this result, please contact the tester.  
For other inquiries, please contact [webmaster@spec.org](mailto:webmaster@spec.org).

Tested with SPEC CPU2006 v1.2.  
Report generated on Tue May 19 18:13:30 2015 by SPEC CPU2006 PS/PDF formatter v6932.  
Originally published on 19 May 2015.