



SPEC[®] MPIM2007 Result

Copyright 2006-2010 Standard Performance Evaluation Corporation

Cray

SPECmpiM_peak2007 = Not Run

Big Red II (AMD Opteron 6380, 2.5 GHz)

SPECmpiM_base2007 = 40.7

MPI2007 license: 3440A

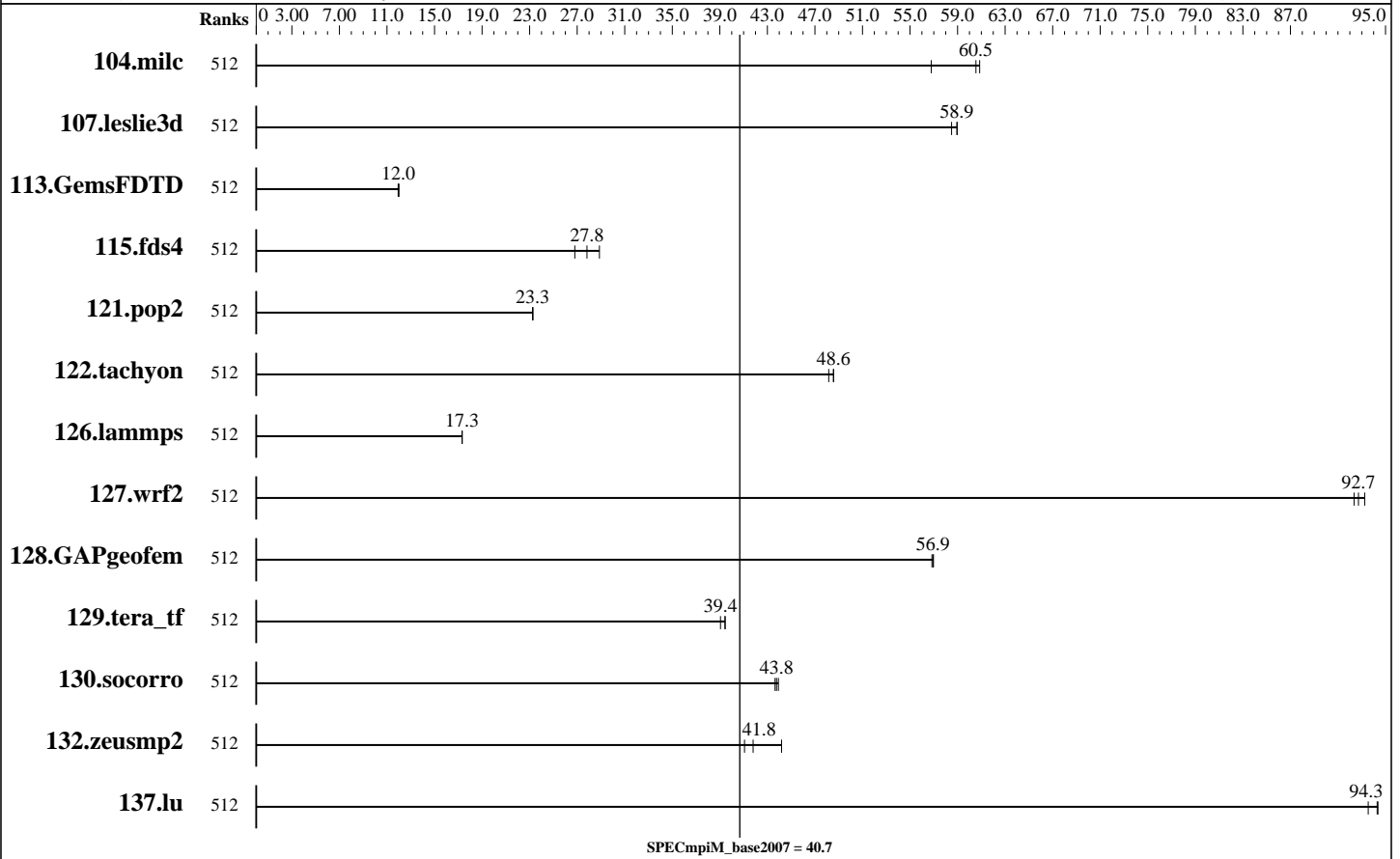
Test date: Mar-2015

Test sponsor: Indiana University

Hardware Availability: Apr-2013

Tested by: Indiana University

Software Availability: Jun-2013



Results Table

Benchmark	Base							Peak						
	Ranks	Seconds	Ratio	Seconds	Ratio	Seconds	Ratio	Ranks	Seconds	Ratio	Seconds	Ratio	Seconds	Ratio
104.milc	512	<u>25.8</u>	60.5	25.7	60.9	27.6	56.8							
107.leslie3d	512	88.5	59.0	88.6	58.9	89.2	58.5							
113.GemsFDTD	512	528	11.9	525	12.0	527	12.0							
115.fds4	512	67.6	28.9	72.8	26.8	70.1	27.8							
121.pop2	512	177	23.3	177	23.3	177	23.3							
122.tachyon	512	58.1	48.2	57.6	48.6	57.6	48.6							
126.lammps	512	168	17.3	168	17.3	168	17.3							
127.wrf2	512	84.1	92.7	84.4	92.4	83.6	93.3							
128.GAPgeofem	512	36.2	57.0	36.3	56.8	36.3	56.9							
129.tera_tf	512	70.2	39.4	70.9	39.1	70.2	39.5							

Table continues on next page. Results appear in the order in which they were run. Bold underlined text indicates a median measurement.



SPEC MPIM2007 Result

Copyright 2006-2010 Standard Performance Evaluation Corporation

Cray

SPECmpiM_peak2007 = Not Run

Big Red II (AMD Opteron 6380, 2.5 GHz)

SPECmpiM_base2007 = 40.7

MPI2007 license: 3440A

Test sponsor: Indiana University

Tested by: Indiana University

Test date: Mar-2015

Hardware Availability: Apr-2013

Software Availability: Jun-2013

Results Table (Continued)

Benchmark	Base							Peak						
	Ranks	Seconds	Ratio	Seconds	Ratio	Seconds	Ratio	Ranks	Seconds	Ratio	Seconds	Ratio	Seconds	Ratio
130.socorro	512	<u>87.2</u>	<u>43.8</u>	87.5	43.6	86.9	43.9							
132.zeusmp2	512	75.5	41.1	70.2	44.2	<u>74.2</u>	<u>41.8</u>							
137.lu	512	39.0	94.4	<u>39.0</u>	<u>94.3</u>	39.3	93.5							

Results appear in the order in which they were run. Bold underlined text indicates a median measurement.

Hardware Summary

Type of System: Homogeneous
 Compute Node: Big Red II Node
 Interconnects: Infiniband (QDR)
 Cray Gemini
 File Server Node: Data Capacitor II
 Total Compute Nodes: 32
 Total Chips: 64
 Total Cores: 1024
 Total Threads: 1024
 Total Memory: 2 TB
 Base Ranks Run: 512
 Minimum Peak Ranks: --
 Maximum Peak Ranks: --

Software Summary

C Compiler: Intel C Composer XE 2013 for Linux, Version 13.1.3.192 Build 20130607
 C++ Compiler: Intel C++ Composer XE 2013 for Linux, Version 13.1.3.192 Build 20130607
 Fortran Compiler: Intel Fortran Composer XE 2013 for Linux, Version 13.1.3.192 Build 20130607
 Base Pointers: 64-bit
 Peak Pointers: 64-bit
 MPI Library: Cray MPI (MPT) 7.1.2
 Other MPI Info: None
 Pre-processors: No
 Other Software: None

Node Description: Big Red II Node

Hardware

Number of nodes: 32
 Uses of the node: compute
 Vendor: Cray
 Model: XE6
 CPU Name: AMD Opteron 6380
 CPU(s) orderable: 1-2 chips
 Chips enabled: 2
 Cores enabled: 32
 Cores per chip: 16
 Threads per core: 1
 CPU Characteristics: AMD Turbo CORE technology up to 3.40 GHz
 CPU MHz: 2500
 Primary Cache: 512 KB I on chip per chip, 64 KB I shared / 2 cores; 16 KB D on chip per core
 Secondary Cache: 16 MB I+D on chip per chip, 2 MB shared / 2 cores
 L3 Cache: 16 MB I+D on chip per chip, 8 MB shared / 8 cores
 Other Cache: None
 Memory: 64 GB (8 x 8 GB 2Rx4 PC3L-12800R-11, ECC running at 1600 MHz and CL11)
 Disk Subsystem: None
 Other Hardware: None
 Adapter: Mellanox ConnectX MHQH29-XTC
 Number of Adapters: 1
 Slot Type: PCIe x8 Gen 2

Software

Adapter: Mellanox ConnectX MHQH29-XTC
 Adapter Driver: 1.0-ofed1.5.4
 Adapter Firmware: 2.9.1000
 Adapter: Cray Gemini
 Adapter Driver: Proprietary Cray_kgni
 Adapter Firmware: 0.17
 Operating System: SUSE Linux Enterprise Server 11 (x86_64), Cray Linux Environment 4.2, Kernel 2.6.32.59-0.7.1_1.0402.7496-cray_gem_c
 Local File System: None
 Shared File System: lustre
 System State: Multi-User
 Other Software: TORQUE-2.5.7

Continued on next page



SPEC MPIM2007 Result

Copyright 2006-2010 Standard Performance Evaluation Corporation

Cray

SPECmpiM_peak2007 = Not Run

Big Red II (AMD Opteron 6380, 2.5 GHz)

SPECmpiM_base2007 = 40.7

MPI2007 license: 3440A

Test sponsor: Indiana University

Tested by: Indiana University

Test date: Mar-2015

Hardware Availability: Apr-2013

Software Availability: Jun-2013

Node Description: Big Red II Node

Data Rate:	40Gbps
Ports Used:	1
Interconnect Type:	40 Gigabit Infiniband (QDR)
Adapter:	Cray Gemini
Number of Adapters:	1
Slot Type:	AMD HyperTransport 3
Data Rate:	76.8Gbps
Ports Used:	1
Interconnect Type:	Gemini

Node Description: Data Capacitor II

Hardware	
Number of nodes:	2
Uses of the node:	fileserver
Vendor:	DDN
Model:	DDN SFA12K
CPU Name:	Intel Xeon CPU E5-2620
CPU(s) orderable:	1-2 chips
Chips enabled:	2
Cores enabled:	12
Cores per chip:	6
Threads per core:	1
CPU Characteristics:	Intel Turbo Boost Technology up to 2.50 GHz
CPU MHz:	2000
Primary Cache:	32 KB I + 32 KB D on chip per core
Secondary Cache:	256 KB I+D on chip per core
L3 Cache:	15 MB I+D on chip per chip
Other Cache:	None
Memory:	96 GB
Disk Subsystem:	30 TB RAID 6, 10 (8 + 2) x 3 TB SATA (Hitachi, 7200RPM, 6.0Gbps)
Other Hardware:	None
Adapter:	Mellanox ConnectX MHQH29-XTC
Number of Adapters:	1
Slot Type:	PCIe x8 Gen 2
Data Rate:	40Gbps
Ports Used:	1
Interconnect Type:	40 Gigabit Infiniband (QDR)

Software	
Adapter:	Mellanox ConnectX MHQH29-XTC
Adapter Driver:	1.0-ofed1.5.4
Adapter Firmware:	2.9.1000
Operating System:	CentOS 6.2
Local File System:	Linux/ext4
Shared File System:	lustre
System State:	Multi-User
Other Software:	None

Interconnect Description: Infiniband (QDR)

Hardware	
Vendor:	DDN
Model:	Mellanox SX6506
Switch Model:	Mellanox SX6506

Software

Continued on next page



SPEC MPIM2007 Result

Copyright 2006-2010 Standard Performance Evaluation Corporation

Cray

SPECmpiM_peak2007 = Not Run

Big Red II (AMD Opteron 6380, 2.5 GHz)

SPECmpiM_base2007 = 40.7

MPI2007 license: 3440A

Test sponsor: Indiana University

Tested by: Indiana University

Test date: Mar-2015

Hardware Availability: Apr-2013

Software Availability: Jun-2013

Interconnect Description: Infiniband (QDR)

Number of Switches:	1
Number of Ports:	108
Data Rate:	56 Gbps
Firmware:	mellanox SX6506
Topology:	switched
Primary Use:	Lustre fileserver

Interconnect Description: Cray Gemini

	Hardware	Software
Vendor:	Cray	
Model:	Cray Gemini	
Switch Model:	Cray Gemini	
Number of Switches:	264	
Number of Ports:	48	
Data Rate:	9.36 GB/s	
Firmware:	0.17	
Topology:	3D Torus	
Primary Use:	MPI traffic	

Submit Notes

The config file option 'submit' was used.

General Notes

130.socorro (base): "nullify_ptrs" src.alt was used.

MPI startup command:

```
aprun command was used to start MPI jobs. A flag below
is used to place processes onto 16 cores out of 32 on a node:
-cc 0,2,4,6,8,10,12,14,16,18,20,22,24,26,28,30
```

export MPICH_NO_BUFFER_ALIAS_CHECK=true

If set, the buffer alias error check for collectives is disabled. The MPI standard does not allow aliasing of type OUT or INOUT parameters on the same collective function call. The default is false.

Network:

3D Torus

Job placement:

PBS is used for job placement.
 Compute nodes are selected by PBS.
 No specific node selection is used.



SPEC MPIM2007 Result

Copyright 2006-2010 Standard Performance Evaluation Corporation

Cray

SPECmpiM_peak2007 = Not Run

Big Red II (AMD Opteron 6380, 2.5 GHz)

SPECmpiM_base2007 = 40.7

MPI2007 license: 3440A

Test sponsor: Indiana University

Tested by: Indiana University

Test date: Mar-2015

Hardware Availability: Apr-2013

Software Availability: Jun-2013

Base Compiler Invocation

C benchmarks:

cc

C++ benchmarks:

126.lammps: CC

Fortran benchmarks:

ftn

Benchmarks using both Fortran and C:

cc ftn

Base Portability Flags

121.pop2: -DSPEC_MPI_CASE_FLAG
126.lammps: -DMPICH_IGNORE_CXX_SEEK
127.wrf2: -DSPEC_MPI_CASE_FLAG -DSPEC_MPI_LINUX
130.socorro: -assume nostd_intent_in

Base Optimization Flags

C benchmarks:

-O3 -no-prec-div

C++ benchmarks:

126.lammps: -O3 -no-prec-div

Fortran benchmarks:

-O3 -no-prec-div

Benchmarks using both Fortran and C:

-O3 -no-prec-div

The flags file that was used to format this result can be browsed at

http://www.spec.org/mpi2007/flags/EM64T_Intel140_flags.20150429.html

You can also download the XML flags source by saving the following link:

http://www.spec.org/mpi2007/flags/EM64T_Intel140_flags.20150429.xml



SPEC MPIM2007 Result

Copyright 2006-2010 Standard Performance Evaluation Corporation

Cray

SPECmpiM_peak2007 = Not Run

Big Red II (AMD Opteron 6380, 2.5 GHz)

SPECmpiM_base2007 = 40.7

MPI2007 license: 3440A

Test sponsor: Indiana University

Tested by: Indiana University

Test date: Mar-2015

Hardware Availability: Apr-2013

Software Availability: Jun-2013

SPEC and SPEC MPI are registered trademarks of the Standard Performance Evaluation Corporation. All other brand and product names appearing in this result are trademarks or registered trademarks of their respective holders.

For questions about this result, please contact the tester.
For other inquiries, please contact webmaster@spec.org.

Tested with SPEC MPI2007 v2.0.1.
Report generated on Wed Apr 29 12:32:26 2015 by SPEC MPI2007 PS/PDF formatter v1463.
Originally published on 29 April 2015.