



SPEC® CINT2006 Result

Copyright 2006-2016 Standard Performance Evaluation Corporation

Huawei

SPECint®2006 = **71.5**

Huawei XH620 V3 (Intel Xeon E5-2690 v4)

SPECint_base2006 = **68.3**

CPU2006 license: 3175

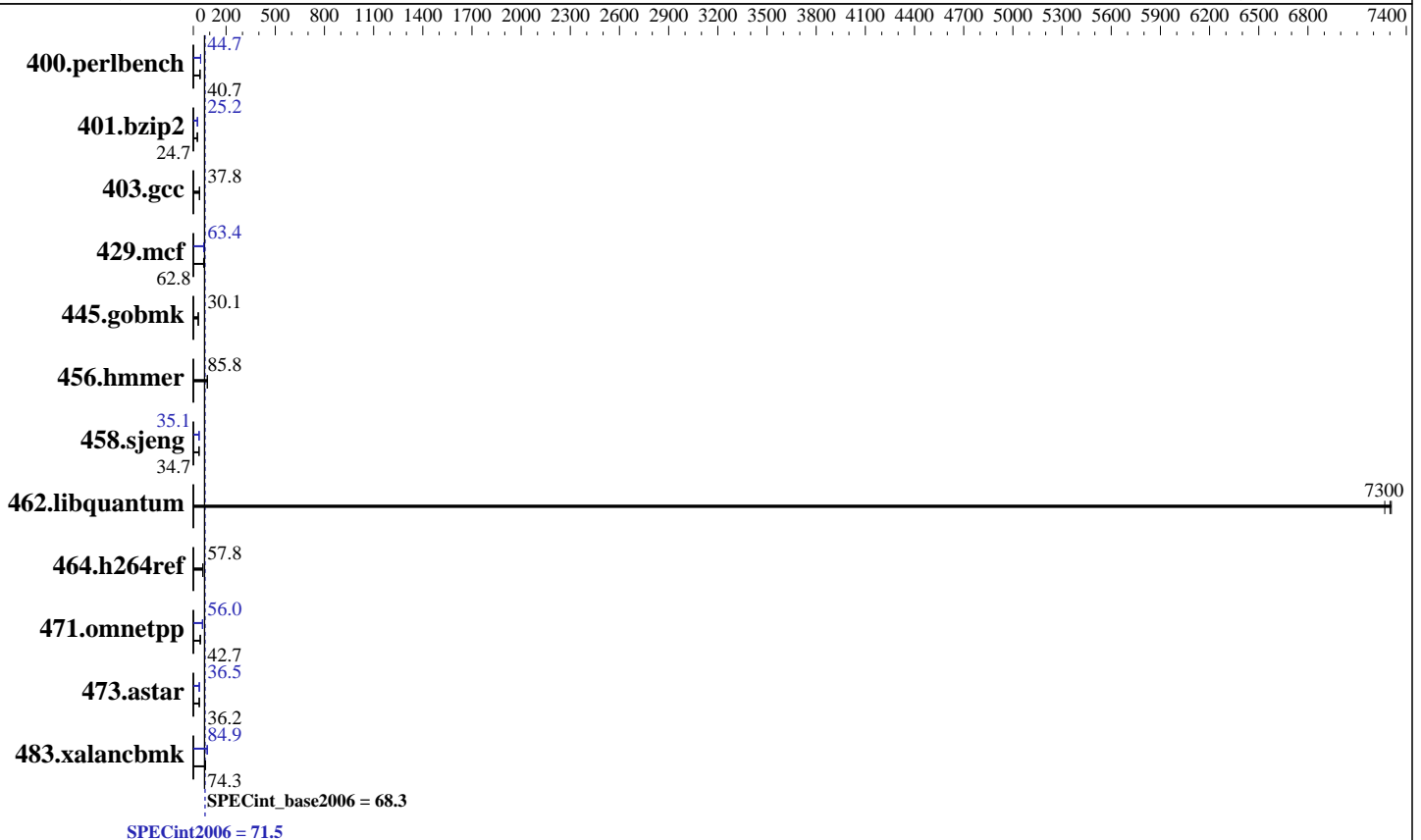
Test sponsor: Huawei

Tested by: Huawei

Test date: Nov-2016

Hardware Availability: Mar-2016

Software Availability: Dec-2015



Hardware

CPU Name: Intel Xeon E5-2690 v4
 CPU Characteristics: Intel Turbo Boost Technology up to 3.50 GHz
 CPU MHz: 2600
 FPU: Integrated
 CPU(s) enabled: 28 cores, 2 chips, 14 cores/chip
 CPU(s) orderable: 1,2 chip
 Primary Cache: 32 KB I + 32 KB D on chip per core
 Secondary Cache: 256 KB I+D on chip per core
 L3 Cache: 35 MB I+D on chip per chip
 Other Cache: None
 Memory: 256 GB (16 x 16 GB 2Rx8 PC4-2400T-R)
 Disk Subsystem: 1 x 800 GB SATA SSD
 Other Hardware: None

Software

Operating System: SUSE Linux Enterprise Server 12 SP1 (x86_64)
 3.12.49-11-default
 Compiler: C/C++; Version 16.0.0.101 of Intel C++ Studio XE for Linux
 Auto Parallel: Yes
 File System: ext4
 System State: Run level 3 (multi-user)
 Base Pointers: 32/64-bit
 Peak Pointers: 32/64-bit
 Other Software: Microquill SmartHeap V10.2



SPEC CINT2006 Result

Copyright 2006-2016 Standard Performance Evaluation Corporation

Huawei

SPECint2006 = 71.5

Huawei XH620 V3 (Intel Xeon E5-2690 v4)

SPECint_base2006 = 68.3

CPU2006 license: 3175
Test sponsor: Huawei
Tested by: Huawei

Test date: Nov-2016
Hardware Availability: Mar-2016
Software Availability: Dec-2015

Results Table

Benchmark	Base						Peak					
	Seconds	Ratio	Seconds	Ratio	Seconds	Ratio	Seconds	Ratio	Seconds	Ratio	Seconds	Ratio
400.perlbench	240	40.7	241	40.6	239	40.8	219	44.7	219	44.7	220	44.5
401.bzip2	389	24.8	391	24.7	391	24.7	383	25.2	382	25.2	383	25.2
403.gcc	213	37.8	213	37.8	213	37.7	213	37.8	213	37.8	213	37.7
429.mcf	146	62.6	145	62.8	144	63.4	144	63.2	144	63.4	142	64.4
445.gobmk	348	30.1	348	30.1	348	30.1	348	30.1	348	30.1	348	30.1
456.hmmer	109	85.8	109	85.8	109	85.6	109	85.8	109	85.8	109	85.6
458.sjeng	349	34.6	349	34.7	349	34.7	345	35.1	345	35.1	346	35.0
462.libquantum	2.83	7310	2.85	7270	2.84	7300	2.83	7310	2.85	7270	2.84	7300
464.h264ref	384	57.7	383	57.8	381	58.0	384	57.7	383	57.8	381	58.0
471.omnetpp	146	42.7	146	42.7	149	41.9	112	56.0	112	55.9	111	56.1
473.astar	194	36.2	193	36.5	195	36.1	192	36.6	192	36.5	193	36.3
483.xalancbmk	92.9	74.3	92.2	74.9	94.3	73.2	80.9	85.3	81.4	84.8	81.3	84.9

Results appear in the order in which they were run. Bold underlined text indicates a median measurement.

Submit Notes

The config file option 'submit' was used.

Operating System Notes

Stack size set to unlimited using "ulimit -s unlimited"

Platform Notes

BIOS configuration:

Set Power Efficiency Mode to Custom

Set Snoop Mode to ES mode

Set Patrol Scrub to Disable

Set Hyper-Threading to Disable

Sysinfo program /spec/spec16/config/sysinfo.rev6914

\$Rev: 6914 \$ \$Date:: 2014-06-25 # \$ e3fbb8667b5a285932ceab81e28219e1

running on linux-n8wl Tue Nov 15 23:17:13 2016

This section contains SUT (System Under Test) info as seen by some common utilities. To remove or add to this section, see:

<http://www.spec.org/cpu2006/Docs/config.html#sysinfo>

From /proc/cpuinfo

model name : Intel(R) Xeon(R) CPU E5-2690 v4@ 2.60GHz

2 "physical id"s (chips)

28 "processors"

cores, siblings (Caution: counting these is hw and system dependent. The following excerpts from /proc/cpuinfo might not be reliable. Use with

Continued on next page

Standard Performance Evaluation Corporation

info@spec.org

<http://www.spec.org/>

Page 2



SPEC CINT2006 Result

Copyright 2006-2016 Standard Performance Evaluation Corporation

Huawei

SPECint2006 = 71.5

Huawei XH620 V3 (Intel Xeon E5-2690 v4)

SPECint_base2006 = 68.3

CPU2006 license: 3175

Test sponsor: Huawei

Tested by: Huawei

Test date: Nov-2016

Hardware Availability: Mar-2016

Software Availability: Dec-2015

Platform Notes (Continued)

```

caution.)
  cpu cores : 14
  siblings  : 14
  physical 0: cores 0 1 2 3 4 5 6 8 9 10 11 12 13 14
  physical 1: cores 0 1 2 3 4 5 6 8 9 10 11 12 13 14
  cache size : 35840 KB

```

```

From /proc/meminfo
MemTotal:      264055876 kB
HugePages_Total:      0
Hugepagesize:    2048 kB

```

```

From /etc/*release* /etc/*version*
SuSE-release:
  SUSE Linux Enterprise Server 12 (x86_64)
  VERSION = 12
  PATCHLEVEL = 1
  # This file is deprecated and will be removed in a future service pack or
  # release.
  # Please check /etc/os-release for details about this release.
os-release:
  NAME="SLES"
  VERSION="12-SP1"
  VERSION_ID="12.1"
  PRETTY_NAME="SUSE Linux Enterprise Server 12 SP1"
  ID="sles"
  ANSI_COLOR="0;32"
  CPE_NAME="cpe:/o:suse:sles:12:sp1"

```

```

uname -a:
Linux linux-n8wl 3.12.49-11-default #1 SMP Wed Nov 11 20:52:43 UTC 2015
(8d714a0) x86_64 x86_64 x86_64 GNU/Linux

```

run-level 3 Nov 15 08:47

```

SPEC is set to: /spec/spec16
Filesystem      Type  Size  Used Avail Use% Mounted on
/dev/sda3       ext4  632G  7.6G  623G   2% /spec

```

Additional information from dmidecode:

Warning: Use caution when you interpret this section. The 'dmidecode' program reads system data which is "intended to allow hardware to be accurately determined", but the intent may not be met, as there are frequent changes to hardware, firmware, and the "DMTF SMBIOS" standard.

BIOS Insyde Corp. 3.31 08/22/2016

Memory:

16x Samsung M393A2K43BB1-CRC 16 GB 2 rank 2400 MHz

(End of data from sysinfo program)



SPEC CINT2006 Result

Copyright 2006-2016 Standard Performance Evaluation Corporation

Huawei

SPECint2006 = 71.5

Huawei XH620 V3 (Intel Xeon E5-2690 v4)

SPECint_base2006 = 68.3

CPU2006 license: 3175

Test sponsor: Huawei

Tested by: Huawei

Test date: Nov-2016

Hardware Availability: Mar-2016

Software Availability: Dec-2015

General Notes

Environment variables set by runspec before the start of the run:

KMP_AFFINITY = "granularity=fine,compact,1,0"

LD_LIBRARY_PATH = "/spec/spec16/libs/32:/spec/spec16/libs/64:/spec/spec16/sh"

OMP_NUM_THREADS = "28"

Binaries compiled on a system with 1x Intel Core i5-4670K CPU + 32GB memory using RedHat EL 7.1

Transparent Huge Pages enabled with:

echo always > /sys/kernel/mm/transparent_hugepage/enabled

runspec command invoked through numactl i.e.:

numactl --interleave=all runspec <etc>

The Huawei XH622 V3 and Huawei XH628 V3 and Huawei XH620 V3 are electronically equivalent.

The results have been measured on a Huawei XH620 V3 model

Base Compiler Invocation

C benchmarks:

icc -m64

C++ benchmarks:

icpc -m64

Base Portability Flags

400.perlbench: -DSPEC_CPU_LP64 -DSPEC_CPU_LINUX_X64

401.bzip2: -DSPEC_CPU_LP64

403.gcc: -DSPEC_CPU_LP64

429.mcf: -DSPEC_CPU_LP64

445.gobmk: -DSPEC_CPU_LP64

456.hmmmer: -DSPEC_CPU_LP64

458.sjeng: -DSPEC_CPU_LP64

462.libquantum: -DSPEC_CPU_LP64 -DSPEC_CPU_LINUX

464.h264ref: -DSPEC_CPU_LP64

471.omnetpp: -DSPEC_CPU_LP64

473.astar: -DSPEC_CPU_LP64

483.xalancbmk: -DSPEC_CPU_LP64 -DSPEC_CPU_LINUX

Base Optimization Flags

C benchmarks:

-xCORE-AVX2 -ipo -O3 -no-prec-div -parallel -opt-prefetch -auto-p32

C++ benchmarks:

-xCORE-AVX2 -ipo -O3 -no-prec-div -opt-prefetch -auto-p32

-Wl,-z,muldefs -L/sh -lsmartheap64



SPEC CINT2006 Result

Copyright 2006-2016 Standard Performance Evaluation Corporation

Huawei

SPECint2006 = 71.5

Huawei XH620 V3 (Intel Xeon E5-2690 v4)

SPECint_base2006 = 68.3

CPU2006 license: 3175
Test sponsor: Huawei
Tested by: Huawei

Test date: Nov-2016
Hardware Availability: Mar-2016
Software Availability: Dec-2015

Base Other Flags

C benchmarks:

403.gcc: -Dalloca=_alloca

Peak Compiler Invocation

C benchmarks (except as noted below):

icc -m64

400.perlbench: icc -m32 -L/opt/intel/compilers_and_libraries_2016/linux/compiler/lib/ia32_lin

C++ benchmarks (except as noted below):

icpc -m32 -L/opt/intel/compilers_and_libraries_2016/linux/compiler/lib/ia32_lin

473.astar: icpc -m64

Peak Portability Flags

400.perlbench: -D_FILE_OFFSET_BITS=64 -DSPEC_CPU_LINUX_IA32
401.bzip2: -DSPEC_CPU_LP64
403.gcc: -DSPEC_CPU_LP64
429.mcf: -DSPEC_CPU_LP64
445.gobmk: -DSPEC_CPU_LP64
456.hmmer: -DSPEC_CPU_LP64
458.sjeng: -DSPEC_CPU_LP64
462.libquantum: -DSPEC_CPU_LP64 -DSPEC_CPU_LINUX
464.h264ref: -DSPEC_CPU_LP64
471.omnetpp: -D_FILE_OFFSET_BITS=64
473.astar: -DSPEC_CPU_LP64
483.xalancbmk: -D_FILE_OFFSET_BITS=64 -DSPEC_CPU_LINUX

Peak Optimization Flags

C benchmarks:

400.perlbench: -xCORE-AVX2(pass 2) -prof-gen:threadsafe(pass 1)
-ipo(pass 2) -O3(pass 2) -no-prec-div(pass 2)
-par-num-threads=1(pass 1) -prof-use(pass 2) -opt-prefetch
-ansi-alias

401.bzip2: -xCORE-AVX2(pass 2) -prof-gen:threadsafe(pass 1)
-ipo(pass 2) -O3(pass 2) -no-prec-div
-par-num-threads=1(pass 1) -prof-use(pass 2) -auto-ilp32
-opt-prefetch -ansi-alias

Continued on next page



SPEC CINT2006 Result

Copyright 2006-2016 Standard Performance Evaluation Corporation

Huawei

SPECint2006 = 71.5

Huawei XH620 V3 (Intel Xeon E5-2690 v4)

SPECint_base2006 = 68.3

CPU2006 license: 3175

Test date: Nov-2016

Test sponsor: Huawei

Hardware Availability: Mar-2016

Tested by: Huawei

Software Availability: Dec-2015

Peak Optimization Flags (Continued)

403.gcc: basepeak = yes

429.mcf: -xCORE-AVX2 -ipo -O3 -no-prec-div -parallel
-opt-prefetch -auto-p32

445.gobmk: basepeak = yes

456.hmmr: basepeak = yes

458.sjeng: -xCORE-AVX2(pass 2) -prof-gen:threadsafe(pass 1)
-ipo(pass 2) -O3(pass 2) -no-prec-div(pass 2)
-par-num-threads=1(pass 1) -prof-use(pass 2) -unroll4

462.libquantum: basepeak = yes

464.h264ref: basepeak = yes

C++ benchmarks:

471.omnetpp: -xCORE-AVX2(pass 2) -prof-gen:threadsafe(pass 1)
-ipo(pass 2) -O3(pass 2) -no-prec-div(pass 2)
-par-num-threads=1(pass 1) -prof-use(pass 2)
-opt-ra-region-strategy=block -ansi-alias
-Wl,-z,muldefs -L/sh -lsmarheap

473.astar: -xCORE-AVX2 -ipo -O3 -no-prec-div -opt-prefetch
-auto-p32 -Wl,-z,muldefs -L/sh -lsmarheap64

483.xalancbmk: -xCORE-AVX2 -ipo -O3 -no-prec-div -opt-prefetch
-ansi-alias -Wl,-z,muldefs -L/sh -lsmarheap

Peak Other Flags

C benchmarks:

403.gcc: -Dalloca=_alloca

The flags files that were used to format this result can be browsed at

<http://www.spec.org/cpu2006/flags/Intel-ic16.0-official-linux64.html>

<http://www.spec.org/cpu2006/flags/Huawei-Platform-Settings-BDW-V1.0.html>

You can also download the XML flags sources by saving the following links:

<http://www.spec.org/cpu2006/flags/Intel-ic16.0-official-linux64.xml>

<http://www.spec.org/cpu2006/flags/Huawei-Platform-Settings-BDW-V1.0.xml>



SPEC CINT2006 Result

Copyright 2006-2016 Standard Performance Evaluation Corporation

Huawei

SPECint2006 = 71.5

Huawei XH620 V3 (Intel Xeon E5-2690 v4)

SPECint_base2006 = 68.3

CPU2006 license: 3175

Test sponsor: Huawei

Tested by: Huawei

Test date: Nov-2016

Hardware Availability: Mar-2016

Software Availability: Dec-2015

SPEC and SPECint are registered trademarks of the Standard Performance Evaluation Corporation. All other brand and product names appearing in this result are trademarks or registered trademarks of their respective holders.

For questions about this result, please contact the tester.
For other inquiries, please contact webmaster@spec.org.

Tested with SPEC CPU2006 v1.2.
Report generated on Thu Dec 15 11:17:53 2016 by SPEC CPU2006 PS/PDF formatter v6932.
Originally published on 13 December 2016.